

FIGURE 8-1 How a Bill Becomes Law

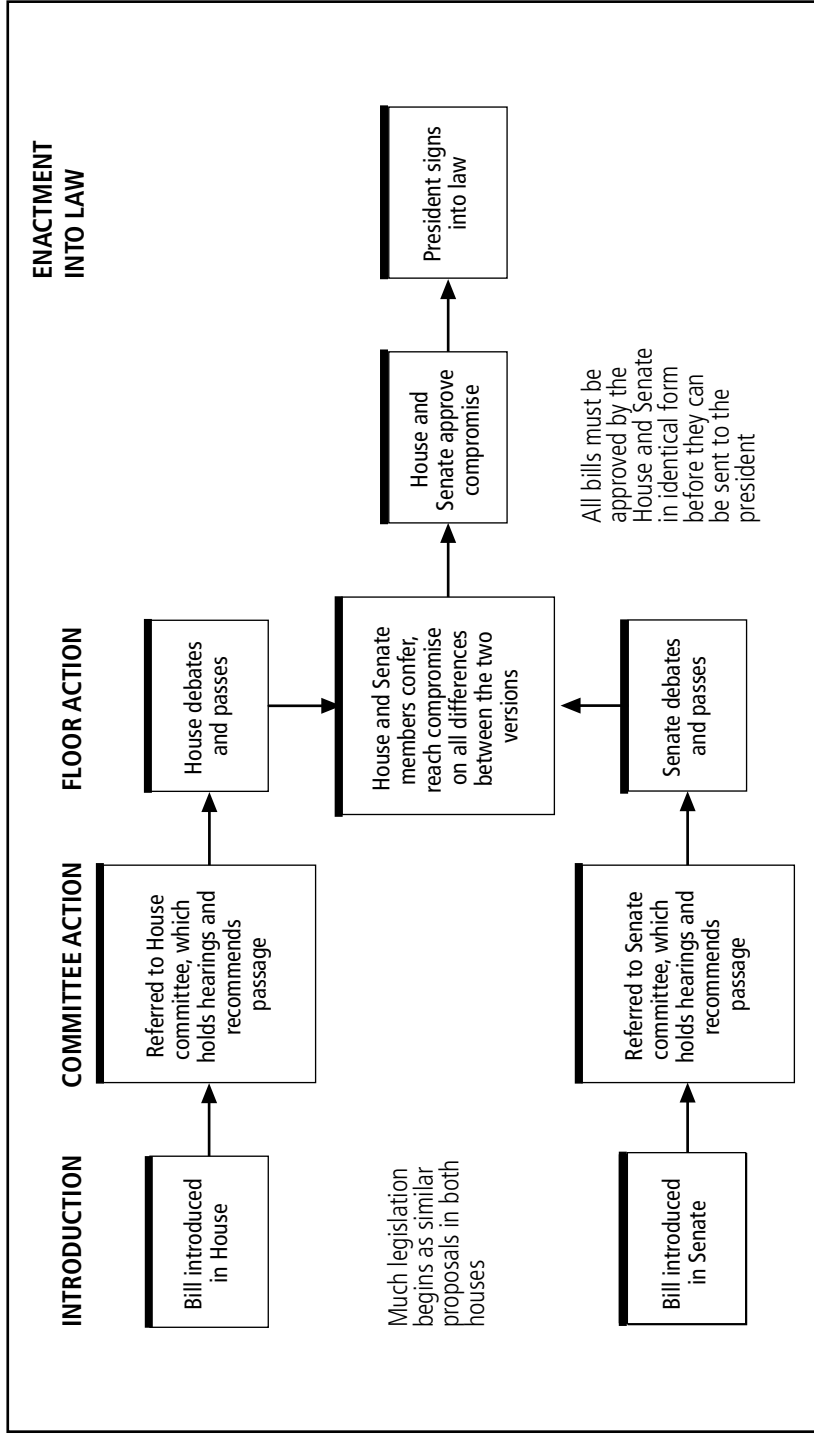


TABLE 8-1 **Open and Structured Rules, 103d–113th Congresses (1993–2014)**

Congress	Open/ Modified Open		Structured		Closed		Totals	
	Number	Percent	Number	Percent	Number	Percent	Number	Percent
103d (1993–1995)	46	44%	49	47%	9	9%	104	100%
104th (1995–1997)	83	58	40	28	19	14	142	100
105th (1997–1998)	74	53	42	30	24	17	140	100
106th (1999–2000)	91	51	49	27	39	22	179	100
107th (2001–2002)	40	37	44	41	23	22	107	100
108th (2003–2004)	34	26	62	47	37	28	133	100
109th (2005–2006)	24	19	61	49	40	32	125	100
110th (2007–2008)	23	14	81	50	59	36	111	100
111th (2009–2010)	0	0	73	65	38	34	111	100
112th (2011–2012)	25	18	65	46	50	36	140	100
113th (2013–2014)	12	8	65	43	72	48	149	100

Source: Don Wolfensberger, resident scholar, Bipartisan Policy Center, Washington, D.C. Wolfensberger is a former decades-long professional staff aide and staff director of the House Rules Committee.

Note: The table applies only to special rules providing for the initial consideration for amendment of bills, joint resolutions, and significant concurrent resolutions (e.g., budget, war-related). It does not apply to privileged resolutions considered in the House, to subsequent rules for the same measure, to conference reports, or to special rules that only waive points of order against appropriations bills but do not provide for consideration in the Committee of the Whole. Rules making in order more than one bill are counted as a separate rule for each measure made in order, e.g., a rule providing for the consideration of four bills under closed rules is counted as four closed rules. An open rule is one that permits any member to offer an amendment otherwise germane in the Committee of the Whole under the five-minute rule. A modified open rule is one that either requires the pre-printing of amendments in the *Congressional Record*, sets an overall time cap on the amendment process, or both. A structured rule is one that limits the amendments that can be offered to those specified in the special rule and/or report on the rule. A closed rule is one that prohibits the offering of amendments (except those recommended by the reporting committees).